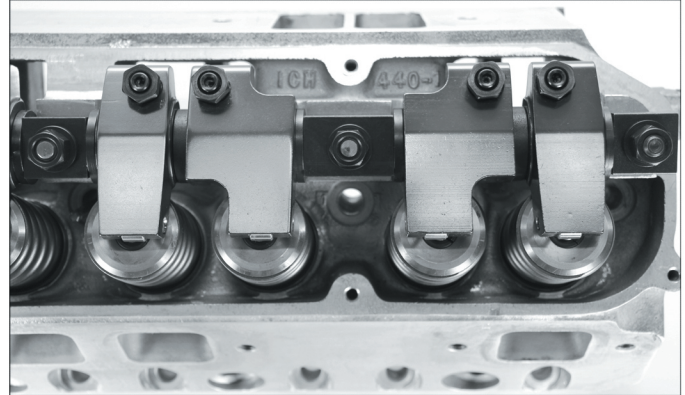


### ROCKER ARM, SPACERS AND SHAFT SET UP

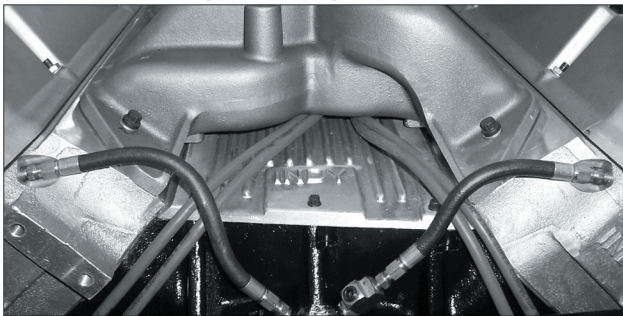
When installing the stock shaft rocker arms (440-4) on a 440 (RB) engine the wide spacer (.250") must be between the intake and exhaust rockers with the thin spacers on the outside of the rockers.

On a 400 (B) engine, the wide spacer (.250") is placed outside the intake rocker with a thin spacer (.150") in the middle and outside the exhaust rocker. All SR rockers have the wide spacer (1.750") between the intake and the exhaust rockers. Rocker shafts are placed on the heads with the oil holes down and toward the valve. Always lubricate shafts and rockers with cam lube before starting.



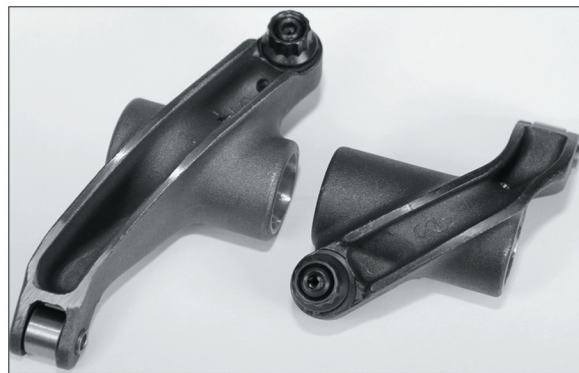
Shown with 440-4 offset rocker arms. Black rockers are 1.5 ratio. Blue rockers are 1.6 ratio.

### INSTALLING EXTERNAL OIL LINES (440-10)

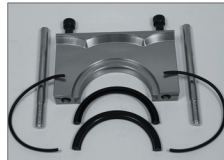


Shown with 440-66 valley plate

Before the block is cleaned and prepped for final assembly, remove pipe plugs and clean both tapped oil sending unit holes in the top of the back of the block. After heads are torqued on in the final assembly, you are ready to install the external oil kit (pictured). All fittings and lines are furnished including a tee for sending unit and two 1/8 pipe plugs which seal front oil holes in the head. Most engines carry approx. 70 lbs. of oil pressure after warm up. An oil line orifice kit can be purchased from Indy Cylinder Head to raise the pressure and slow oil volume to the rocker shaft.



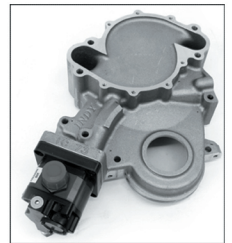
#### Part #223 Seal Retainer



The billet aluminum rear main seal retainer uses single o-rings on each end to seal the cap to the block. Indy produced this retainer to hold the proper dia. to clamp the rear main seal properly. Shown including alignment pins for installation.

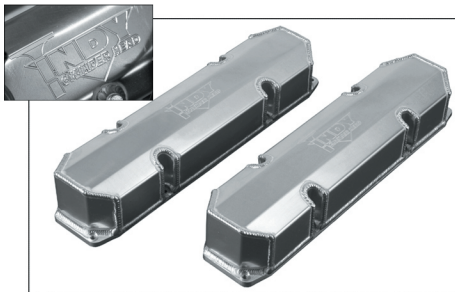
#### Part # 401-25 AMC Front Cover And Pump

Manufactured by Indy to replace the problem plagued AMC front cover. The high volume billet aluminum oil pump is the big advantage. It can be used with stock internal oil pick up or plumbed for external. Can be adjusted for pressure externally and multi stage is possible.



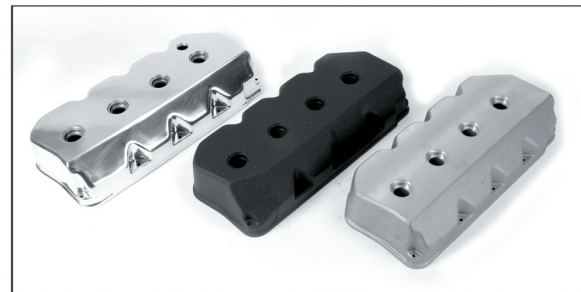
#### Part #426-27 Legend Rockers

Indy roller tip rocker arms for Legend heads or stock Hemi heads. Made from 4140 chrome moly and available in 1.6 intake ratio and 1.55 exhaust ratio. Bronze bushed and improved pushrod oiling.



#### Part # 440-7SM

440 aluminum light weight sheet metal valve covers. Available for most Chrysler and AMC engines. Plain or with engraved INDY logo.



#### Part #426-12 Legend Valve Cover

Aluminum cast valve covers for Legend or stock type Hemi heads. Uses 8 bolts per cover and has extra clearance for exhaust valve spring cast into the cover. # 426-12P polished and 426-12PC powder coat available.

